

We package everything with **HEART**



 **SHINPACK** (THAILAND) CO., LTD.

SHINPACK IS ONE OF SHINWA PACKAGE GROUP IN JAPAN.



JQA-QMA11064

Light-weight, strong, easy-to-use, recy

Various types can be provided to match the specif

General wooden box

(Closed type)



<Max. capacity:500-2,000 kg>



(Crate type)



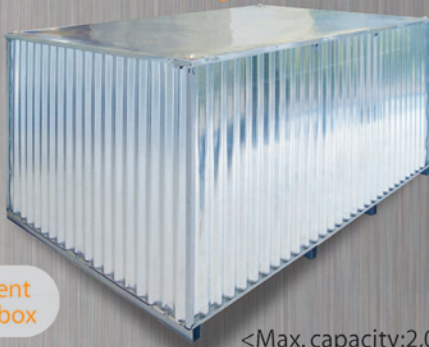
<Max. capacity:500-2,000 kg>



When using STEEL CON

Product by Shinpack

ND type



Standard replacement
for closed wooden box

<Max. capacity:2,000 kg>

When using STEEL CON

Product by Shinpack

CD type

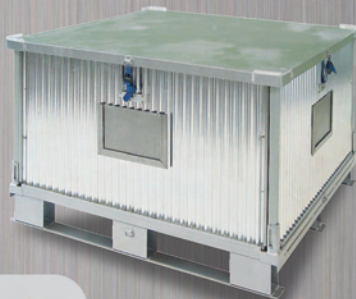


Standard replacement
for wooden crate

<Max. capacity:2,000 kg>

Improved to returnable type

NR type



Reusable

<Max. capacity:2,000 kg>

Weight reduced

Product by Shiwa

LD type



Low-cost
version of
ND type

<Max. capacity: 1,000 kg>

Rationalized

Product by Shiwa

BD type



Ultimate low-cost
version of crate type

Returnabel Case
<Max. capacity:2,000 kg>

able, and cost-effective **STEEL CON**

ications of your currently used transport container

Large wooden box



<Max. capacity:2,000-20,000 kg>

Reinforced corrugated fibreboard box



<Max. capacity:500-1,000 kg>

When using STEEL CON

Product by Shiwa

FD type

35% lighter than a wooden box



<Max capacity:20,000 kg>

When using STEEL CON

Product by Shiwa

ED type

Ultra-light-weight type



<Max. capacity:800 kg>

Rationalized

Product by Shiwa

Composite version of corrugated fibreboard and steel pallet

TD type

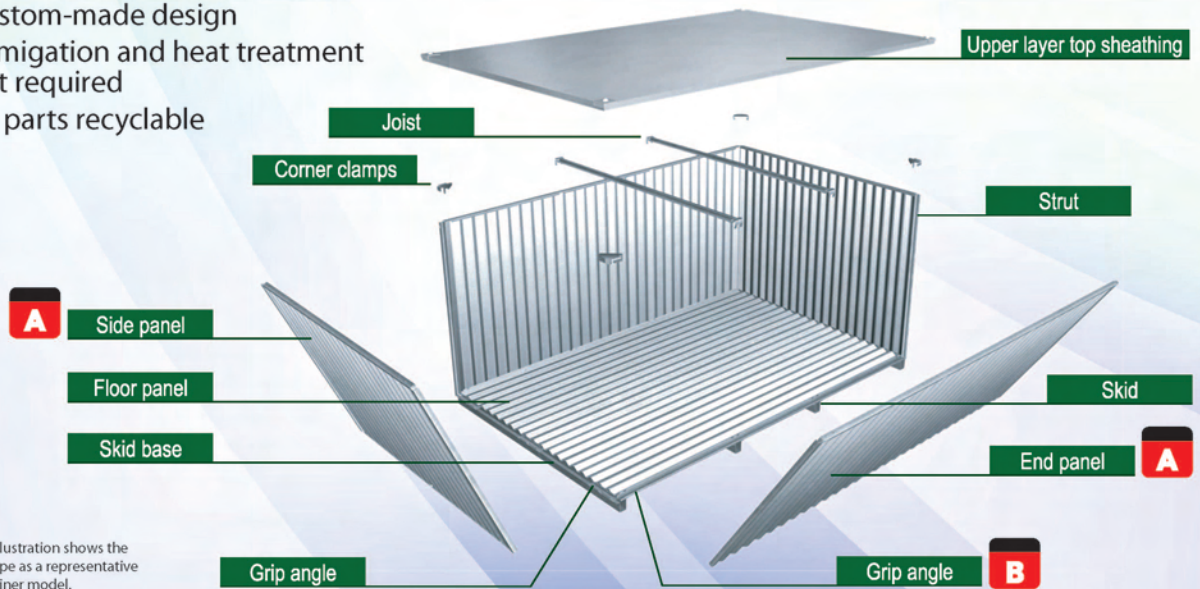


<Max. capacity:500 kg>

Evolution of **STEEL CON** Created by Shinwa

Selected parts and basic specifications of **STEEL CON**

- Easy assembly and unpacking
- Custom-made design
- Fumigation and heat treatment not required
- All parts recyclable



* This illustration shows the ND type as a representative container model.

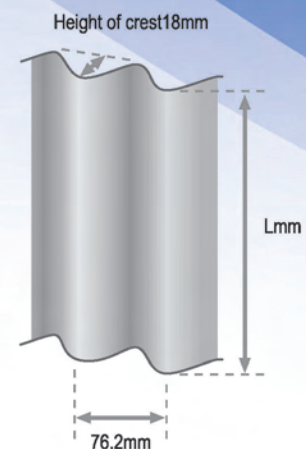
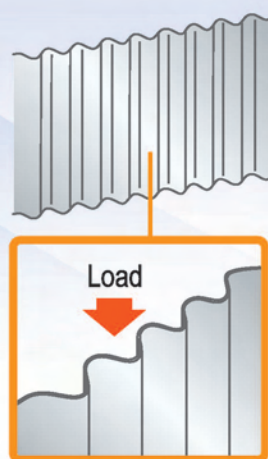
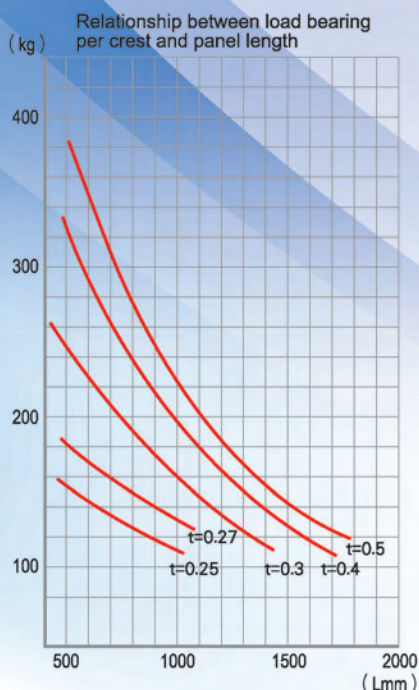
Panel

Light weight, strength, and secure junctions are realized



Wave shape for reinforced strength

The panel is a wave shape steel plate 0.25 to 0.5 mm thick that supports loads with each wave functioning as a strut.

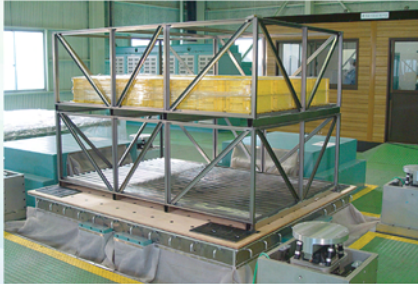


Original Technology and Our Challenging Spirit

 Reliable quality that passed the strict testing of JIS standard (JIS Z0200)

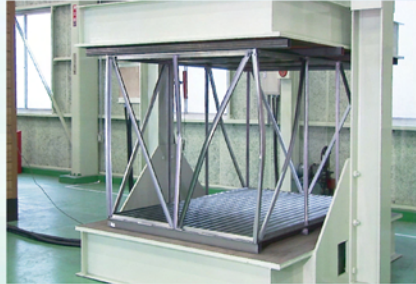
Based on our years of experience and data obtained in our Packaging Test Center, we provide designs that are easy to use.

Vibration test (JIS Z0232)



The Shinwa vibration testing machine enables **random vibration testing** using three-axis simultaneous excitation now recommended by JIS in addition to the former sinusoidal vibration testing that excited only one axis at a time. Since actual shipping data can be analyzed and converted into data for random vibration testing, **tests that reproduce actual shipping conditions** can be performed.

Compression test (JIS Z0212)



Packaged cargo with a container made of metal, wood, corrugated fibreboard, paper board, plastic or a combination of them are compressed in this test. A 20 t pressing machine is used to measure the withstand load when containers are stacked.

Bad road driving test



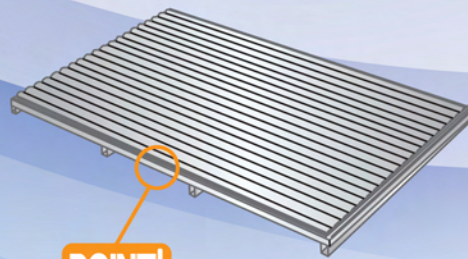
The bad road driving test checks for damage to shipped product due to shaking with large amplitude (impact). Large amplitude that cannot be obtained with a vibration tester can be applied, resulting in a complete test that approximates actual use.

Base

System that allows self-supporting by a one-touch operation

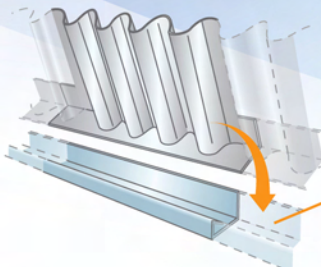


Fixed securely with grip angles



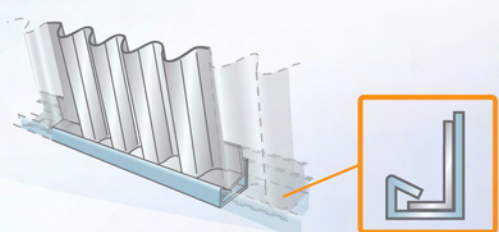
Grip angles are provided around the skid base to allow easy junctions only by using the fitting panels.

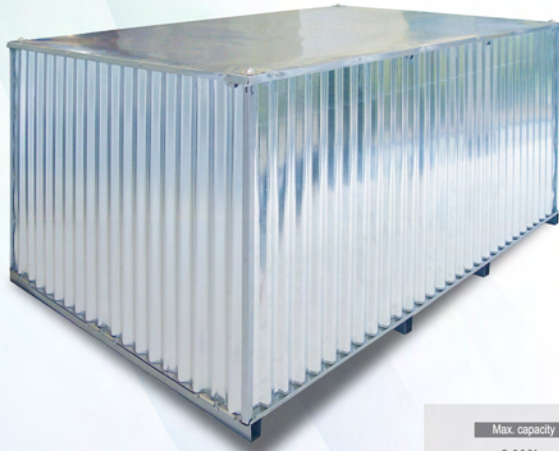
1



Under frame members are provided at the lower part of panels to allow secure fixing by engaging them with grip angles.

2





ND type

Transport container used to replace closed wooden boxes Outdoor storage is possible, and one-touch assembly can be done without bolts.

Closed steel box

One-way type

Light-weight string steel plate

Easy assembly and unpacking

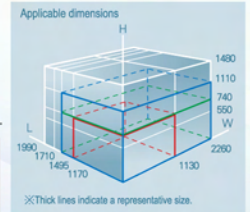
Fumigation and heat treatment not required

Custom-made designs

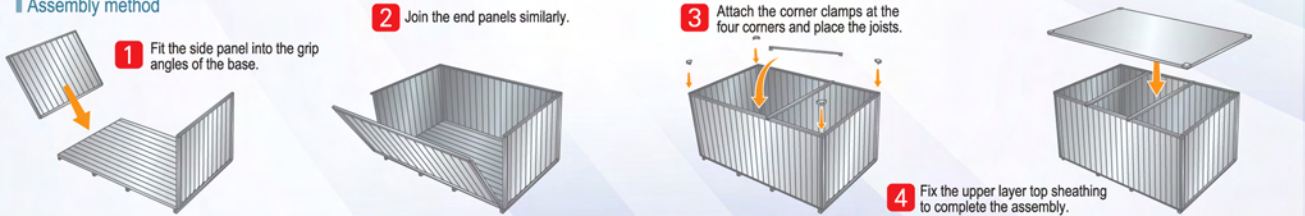
Recyclable

* A container module size is provided.
* The upper layer top sheathing is optional.

Max. capacity	Outside dimensions of representative size L×W×H(mm)	Withstand load
2,000kg	1,495 × 2,260 × 1,110 (T/W75kg)	137kN (14,000kgf)



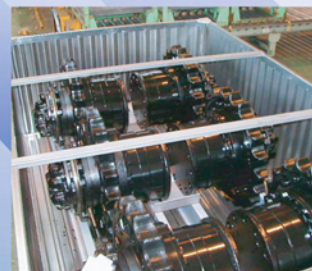
Assembly method



Example of packing separate parts in carton



Example of packing sheet metal press molding



Example of packing mechanical parts



Example of packing construction equipment parts



CD type

Transport container used to replace crate wooden boxes Assembly is easy without bolts. Various models are provided as container modules.

Crate steel box

One-way type

* The assembly method and the applicable dimensions are similar to the ND type.

Max. capacity	Outside dimensions of representative size L×W×H(mm)	Withstand load
2,000kg	1,495 × 2,260 × 1,110 (T/W65kg)	88kN (9,000kgf)



Example of packing automobile parts



Example of packing automobile parts

NR type

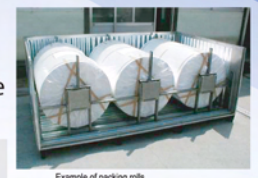
Returnable STEEL CON
Can be easily folded, resulting in space saving collection and storage.

Closed type steel box

Returnable type

Max. capacity	Outside dimensions of model size L×W×H(mm)	Withstand load
2,000kg	1,200 × 1,200 × 845 (T/W 90kg)	147kN (15,000kgf)

This type was adopted for packing materials for an Antarctic expedition team that required use in a severe environment.



Example of packing rolls



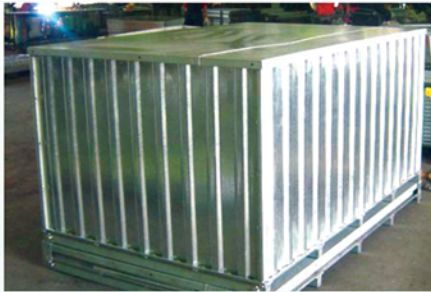
Special air cargo container for aircraft maintenance materials for Japan Airlines International

By folding, this type can be stacked for collection and storage.



Fixing method

All products can be securely fixed with easy mounting. Various forms are supported according to the packing requirements.



Returnable Case

Band hook

Received the Good Packaging Prize in 2002.



A product can be fixed with bands simply by inserting clamps.

Steel dunnage



Example of packing automobile panel parts

Even for a unique product shape, a special steel pedestal can be designed.



Returnable Case



Example of packing construction equipment parts



Example of packing a cab axle



Example of packing an industrial engine



Example of packing a steel bobbin



Example of packing a machine tool

Company Profile

Company Name	SHINPACK (THAILAND) CO., LTD.
Establishment	October 31st, 1996
Operation Start	Jul-97
Capital	10 million Bahts
Location	AMATANAKORN INDUSTRIAL ESTATE CHONBURI, THAILAND
Factory Building	Land : 15,520 m ² (9.7 rai) Factory : 7,510 m ²

Line of Business Sale & Manufacture of Packing Materials.
(Mainly steel Box called "STEELCON")

Shinwa Network provides quick support

Bases in Japan

Kobe Head Office, Kobe Business Office, Kobe Factory **ISO 14001** certification acquired



Kobe Head Office, Kobe Business Office Kobe Factory

Chiba Business Office, Chiba Factory **ISO 9001** certification acquired



Okayama Business Office, Mizushima Factory **ISO 9001** certification acquired



Nagoya Business Office, Nagoya Factory, Packaging Test Center



Nagoya Business Office, Nagoya Factory



Packaging Test Center

Overseas bases

Thailand Factory : Shinpack (Thailand) Co.,Ltd. **ISO 9001** certification acquired



For more information about STEEL CON, contact our business offices shown below.

SHINPACK (THAILAND) CO., LTD.

SHINPACK (THAILAND) CO., LTD.

Amata Nakorn Industrial Estate

700/365 Moo.6.Bangna Trad Road. T.Nongmaidaeng A.Muang Chonburi 20000 THAILAND

TEL : 66-38-458-706-9

FAX : 66-38-458-649

E-mail : w_waiyawut@shinpack.co.th

www.shinpack.co.th